

COUNTY FACT SHEETS

HUNGER IN SOUTH JERSEY

It's hard to imagine that in South Jersey, the place that we call home, there are currently about 197,000 people struggling with food insecurity. Among them, 20,000 are seniors and 57,000 are children. The USDA defines food insecurity as a limited or uncertain access to adequate food.

200,000 PEOPLE LIVING IN FOOD INSECURE HOUSEHOLDS IN SOUTH JERSEY.



1 IN 5 CHILDREN ARE FOOD INSECURE

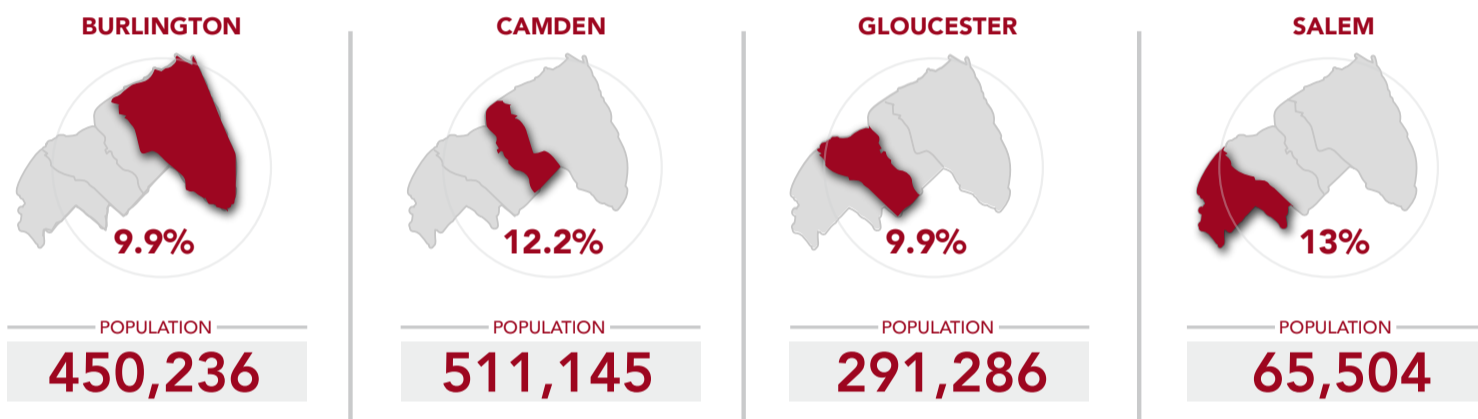


20,000

SENIORS HAVE THE DIFFICULT CHOICE BETWEEN PAYING FOR FOOD OR PAYING FOR THEIR MEDICATION

Essential to powering our lives, good and healthy food should never feel like a choice. But for thousands in South Jersey and millions across the country, it is. In the four counties that we serve (Burlington, Gloucester, Salem, and Camden), nearly 12% of the population are considered food insecure.

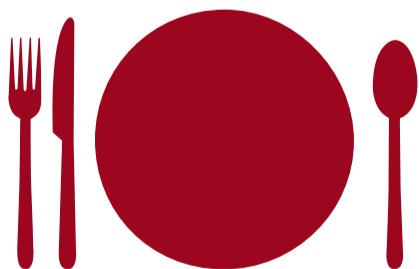
% OF PEOPLE LIVING IN FOOD INSECURE HOUSEHOLDS BY COUNTY



Since 1985, the Food Bank of South Jersey has distributed more than 150 million pounds of food through its core feeding program, connecting the area's neighbors in need to an expansive network of more than 150 pantries, community kitchens and shelters. Through the years, our vision has expanded well beyond core feeding programs to now offer a range of direct services and programs that target the distinct needs of working-poor families, their children, and at-risk seniors while also providing life-changing nutrition education to local communities.

FOOD BANK OF SOUTH JERSEY'S IMPACT

POUNDS OF FOOD DISTRIBUTED TO EACH COUNTY



1.7 MILLION MEALS delivered to BURLINGTON.

5.1 MILLION MEALS delivered to CAMDEN.

1.3 MILLION MEALS delivered to GLOUCESTER.

570 THOUSAND MEALS delivered to SALEM.

FEEDING CHILDREN



28,275
SUMMER MEALS



135,036
SUMMER MEALS



41,834
SUMMER MEALS



19,353
SUMMER MEALS

14,000
AFTER-SCHOOL MEALS
SERVED IN BURLINGTON

25,000
AFTER-SCHOOL MEALS
SERVED IN CAMDEN

28,000
AFTER-SCHOOL MEALS
SERVED IN GLOUCESTER

8,000
AFTER-SCHOOL MEALS
SERVED IN SALEM